

© Freiblick by Eckstein – Robert Hold



FREIBLICK DAY CAFÉ

Rooftop of Kastner & Öhler
 Sackstraße 7-13
 8010 Graz
 +43 316 83 53 02
www.freiblick.co.at

Enjoy unrestricted views over Graz! That’s what’s on offer on the 6th floor of the Kastner & Öhler department store thanks to this (as yet) secret tip. On sunny days on the rooftop terrace of the Freiblick, you can enjoy a breathtaking view over the old town of Graz and an excellent breakfast. Small snacks and meals are available throughout the day, while in the evening, the location is often hired for company parties. The Freiblick should be part of any visit to Graz.

ACCESSIBILITY

Accessibility by public transport

Please use the route planner of the Styria Public Transport Network (Verbundlinie Steiermark):
<https://verkehrsankunft.verbundlinie.at/>

Parking

- Kastner & Öhler underground car park in the same building (entrance on Kaiser-Franz-Josef-Kai 8)

ACCESS AND ENTRANCE

The access (pavement) has natural stone paving and is suitable for wheelchairs.

Visitors can take the lift or the escalator to the café on the roof terrace via the entrance to the Kastner & Öhler department store.

Main entrance of “Kastner & Öhler”:

- Swing doors made of glass, **insufficiently marked**
- Clear door width 83 cm per door leaf
- No thresholds
- Sufficient space in front and behind the door
- Horizontal bar handle at a height of 105 cm



Entrance of Kastner & Öhler



Infected entrance

“Infected” entrance:

- Automatic sliding door made of glass, **insufficiently marked**
- Clear door width 140 cm
- No door jamb
- Low pile carpet suitable for wheelchairs

LIFT

Located on the ground floor of the department store at the rear. Of the 3 available lifts, only the lift on the right goes to the 6th floor, on which the Freiblick is located. For the 6th floor, it is necessary to press a separate push-button (also provided with Braille).

- Lift dimensions 185 x 185 cm
- No horizontal control panel
- Controls at a height of 100–125 cm, also in Braille
- Acoustic signal but no audible announcements
- Handrail at a height of 95 cm
- Mirror available

INTERIOR AREA OF THE FREIBLICK

- Flooring suitable for wheelchairs
- Passage widths generous
- Movable tables and chairs available (the café is also equipped with high tables and/or low coffee tables, though)
- Lower edge of table 70 cm
- 4 table legs, in centre position **therefore no under-table wheelchair access**
- Counter height 108 cm, showcase partially to 75 cm

OUTDOOR DINING AREA:

- Sliding doors made of glass to outdoor dining area **(not sufficiently marked)**
- Clear door width 140 cm
- Flooring: Wooden boards, slightly uneven, OK for wheelchairs.
- Tables and chairs movable, benches aren't



Lift



Interior area



Terrace

- Lower edge of table 72 cm, table size 62 x 62 cm
- Centre table leg, table does not offer full under-table wheelchair access
- Passage widths partially limited due to narrow seating, especially at peak times (at lunchtimes and on Saturdays)

TOILET:

The Freiblick does not have an accessible toilet.

The accessible toilet is located on the ground floor of the Kastner & Öhler department store and is accessible by lift

(it is located near the lift).

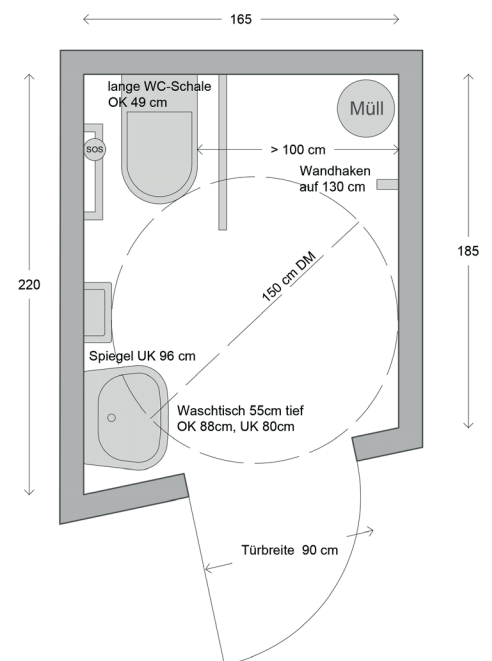
- Marked as accessible; unisex
- Closes with Eurokey!
- Hinged door with lever handle accessibility available
- Clear door width 90 cm
- Turning circle of 150 cm available
- WC height: 49 cm
- WC accessible from the right, on this side approx. 100 cm space
- 1 folding support rail and 1 angled grab bar, standard height (75–85 cm)
- Upper edge of washbasin 88 cm, lower edge 80 cm, depth 55 cm
- Lower edge of mirror 96 cm
- Clothes hook at a height of 130 cm
- Emergency bell available

ADDITIONAL INFO

- Reservation strongly recommended!
- Non-smoking facility
- Smoking permitted in the outdoor dining area
- Baby changing facilities in the WC on the 5th floor
- Dogs are welcome



Accessible WC Kastner & Öhler



WC layout plan